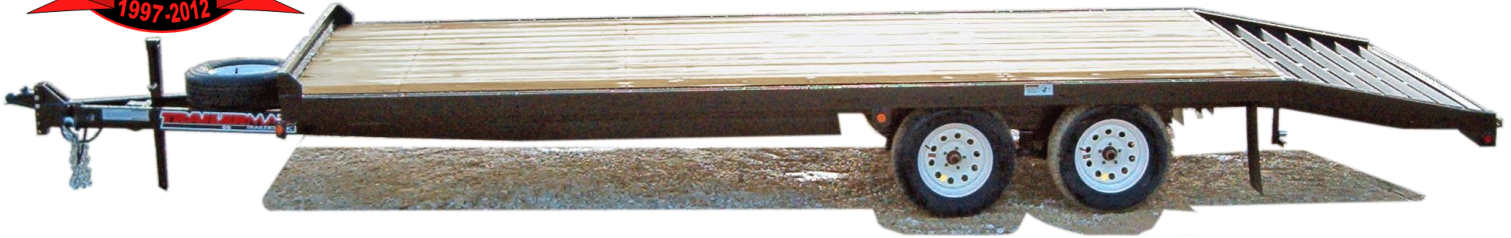




Model # EDT8164007

Equipment Deckover

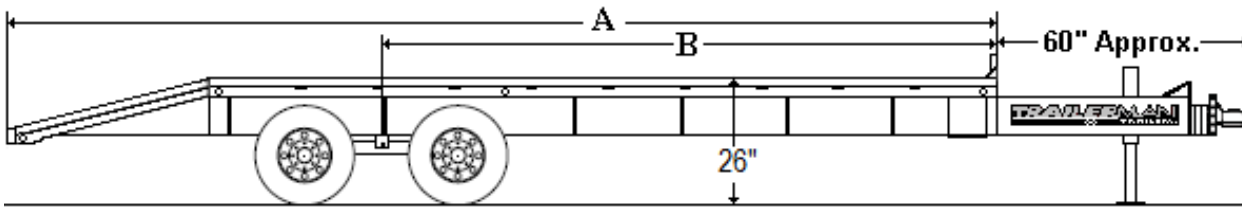
8 1/2' x 16 + 4' (20')



- | | | |
|---|---|--------------------------|
| (1) 3500# EZ Lube Elec. Axle | 2 5/16" Adj Coupler | 2" Treated Lumber Floor |
| (1) 3500# EZ Lube Idler Axle | 7K Dropleg Jack | Stake Pockets & Rub Rail |
| ST205-75R-15 6-PR Tires on 5-Hole Wheel | Rubber Mounted Waterproof Lights | Safety Chains |
| 5' Slide in Ramps w/Rear Storage | Break-A-Way Kit | Spare Tire & Wheel Mtd |
| 4' Self Cleaning Dove | Sealed Wire Harness w/ 7-Way Light Plug | Mud Flaps |

(Ship Wt.: 3,135# G.A.W.R 7,000# G.V.W.R.: 7,000#)

MAINFRAME & TONGUE: 5" Channel **CROSS MEMBERS:** 3" Channel **CENTERS:** 24"



Measurements		
Length	A	B
14	168	106
16	192	121
18	216	136
14+4	216	132
20	240	150
16+4	240	146
22	264	165
18+4	264	161
24	288	180
20+4	288	176

EQUIPMENT DECKOVER OPTIONS	
14' - 24' Lengths	Gooseneck Option
Additional Electric Brake Axle	L.E.D. Light Pkg. Upgrade
6K 6-Hole (5200#) EZ Lube Axle Pkg.	Dual Pin SL Dropleg Jack (12K)
(2) 5' Dual Position Double Swivel Spg. Asstd. Ramps	Less Dove Tail (Includes 7' Ramps)
A-Frame Tool Box (Plastic)	Mesh Tool Tray in Tongue
Less Ramps and Carrier	Weld on D-Rings
1/8" Diamond Plate Steel Floor	

**GREAT FOR LIGHT TO MEDIUM WEIGHT LAWN EQUIPMENT,
SNOWMOBILES, MEDIUM TRACTORS & 4-WHEELERS!!!**

MANY OTHER OPTIONS ARE AVAILABLE –VISIT OUR WEBSITE TO FIND AN AUTHORIZED TRAILERMAN® DEALER:
www.trailertrailer.net

{TrailerMan Trailers, Inc. reserves the right to make changes to the standard features at any time without notification.}